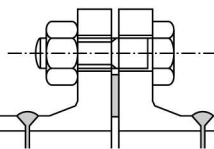
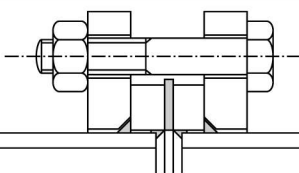


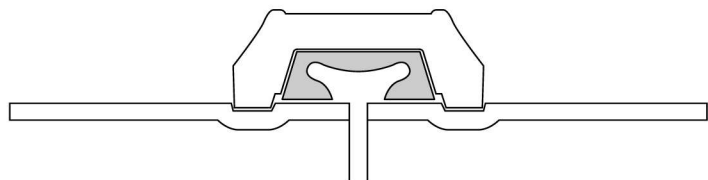
Giunto a flange saldate a sovrapposizione
Joint with circular slip-on welded flanges



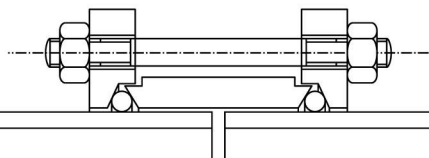
Giunto a flange saldate in testa
Butt welded flanged joint



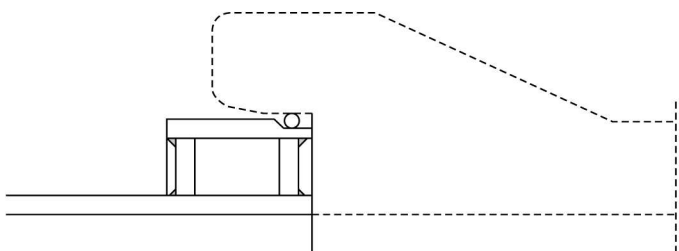
Giunto con anello saldato a sovrapposizione e flangia libera
Overlapping welded ring joint and free flange



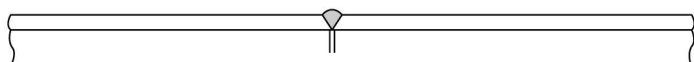
Giunto Victaulic | *Victaulic joint*



Giunto Gibault | *Gibault joint*



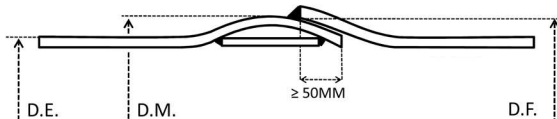
Giunto maschio per tubi C.A.P.
Male joints for C.A.P. pipes



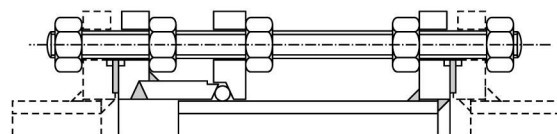
Giunto per saldatura in testa | *Ends suitable for butt welding*



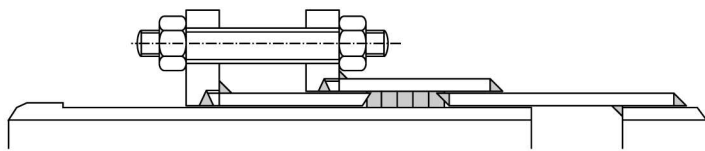
Giunto a bicchiere sferico per saldatura | *Spherical joint*



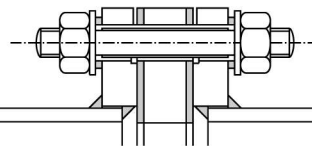
Giunto a bicchiere sferico con camera d'aria
Spherical joint with inner tube



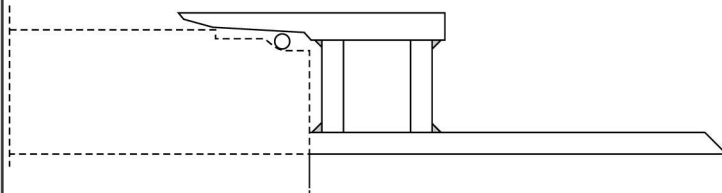
Giunto di smontaggio | *Dismantling joint*



Giunto di dilatazione | *Expansion joint*



Giunto dielettrico | *Dielectric joint*



Giunto femmina per tubi C.A.P.
Female joint for C.A.P. pipes